

Caster 2 Plus Series: LoCaster 2 Plus, BroadCaster 2 Plus

Main Features

The LoCaster 2 Plus and BroadCaster 2 Plus provide:

- Tunable White Light from Tungsten to Daylight
- More than 35% brighter than Caster 2
- Low Power Consumption
- Excellent Shadow Rendering
- CRI Greater Than 90
- Absolute Color Temperature and Intensity Stability
- Onboard or DMX Control
- Easy Portability
- Battery Power Optional

Following up on the success of the ARRI Caster Series LED-based products, ARRI is excited to present the next advancements in the Caster Series: LoCaster 2 Plus and BroadCaster 2 Plus.

Both the LoCaster 2 Plus and BroadCaster 2 Plus have more than 35% increased light output compared with Caster 2, while still maintaining the same form factor and appearance, power draw of 35 W and compatibility with all existing Caster Series power and mounting accessories.

The ARRI Caster Series utilizes an advanced optical design and an LED arrangement which provides an efficient solution for LED lighting at an attractive price level.

The ARRI LoCaster 2 Plus features an easy to use onboard controller with the ability to continuously adjust the CCT from 2,600 K - 6,500 K and full plus or minus green correction. Continuous dimming from 0 - 100% and an ON/OFF switch is also present. Weighing only 960 g (2 lbs), it is an ideal companion for mobile applications. The LoCaster 2 Plus will be available in an attractive lighting kit configuration, with a basic selection of accessories.

The ARRI BroadCaster 2 Plus incorporates a built-in DMX controller and offers versatility when lighting tight spots in small and medium-sized studios.

With color temperature settings adjustable from 2,800 K to 6,500 K and a CRI (Color Rendering Index) of over 94, the ARRI Caster LED fixtures adapt easily to an existing lighting installation or to the variable conditions of a location shoot. They also make use of ARRI LED Technology, guaranteeing natural light characteristics, single shadow rendering, consistent light output and absolute color stability.



Caster panel



LoCaster operation panel



BroadCaster operation panel



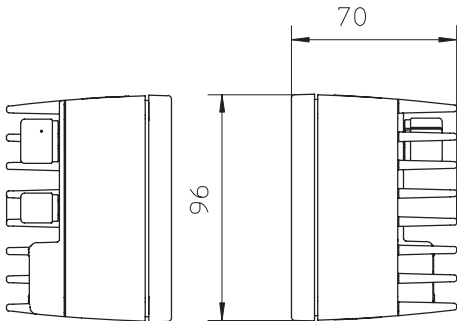
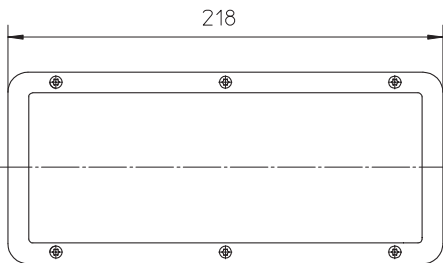
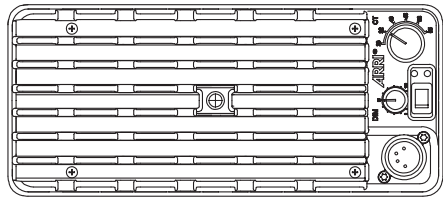
LoCaster 2 Plus Rear View



Caster Series Power Supply 60W/24VDC



Caster Series Power Supply 300W/24VDC, front side



Order No.	Description
L1.0001329	LoCaster 2 Plus 35 W with Onboard Controls, black, 11 - 36 V $\overline{\text{AC}}$
L1.0002309	BroadCaster 2 Plus 35 W with Power DMX Control, black, 11 - 36 V $\overline{\text{AC}}$

Specifications

Optical System	Prismatic Homogenizing Lense
Beam Angle	63° (Half Peak Angle)
Weight	0.96 kg (2.1 lbs)
Size (HxWxL) / Packed Size	70 x 96 x 218 mm / 80 x 115 x 235 mm
Handling	Adjustable Stirrup (optional)
Mounting	Thread 3/8"
Tilt Angle	+/- 90°
Power Supply Range	100 - 240 V AC, 50-60 Hz
Power Consumption	35 W Nominal
Power Connection	Power DMX 4-Pin XLR
DC Voltage Range	11 - 36 V DC
White Light	2,800 K - 6,500 K Continuously Variable CCT
Color Temperature Tolerance	+/- 100 K (nominal), +/- 1/8 Green-Magenta (nominal)
Color Rendition	> 94 CRI
Green-Magenta Adjustment	Continuously Adjustable (Full Minus green to Full Plusgreen)
Dimming	0 - 100% Continuous
Control	LoCaster: On-Board Controls BroadCaster: 5-Pin DMX In and Through
Housing Color	Black
Ambient Temperature Operation	-20° C – +35° C (-4°F – +95°F)
Protection Class	III/IP 20
Estimated LED Lifetime (L70)	50,000 hrs
Estimated Color Shift Over Lifetime	< 200 K
Certifications	CE This device has not yet been authorized by the rules of the Federal Communications Commission. This device is not, and will not be, offered for sale or lease within the United States, until authorization is obtained.

All specifications are nominal / typical values.

Photometric Data (Nominal)

	1 m / 3.3 ft	3 m / 9.8 ft	5 m / 16.4 ft	7 m / 23.0 ft
LoCaster				
Flood: 63°				
3200 K	1035 lx / 96 fc	115 lx / 11 fc	41 lx / 4 fc	21 lx / 2 fc
5600 K	1044 lx / 97 fc	116 lx / 11 fc	42 lx / 4 fc	21 lx / 2 fc
BroadCaster				
Flood: 63°				
3200 K	1035 lx / 96 fc	115 lx / 11 fc	41 lx / 4 fc	21 lx / 2 fc
5600 K	1044 lx / 97 fc	116 lx / 11 fc	42 lx / 4 fc	21 lx / 2 fc